

REVISED PLAT OF PETTWAY PARK

BEING A RE-SUBDIVISION OF LOTS 17-18-22-23-24-27-28 AND 29 OF PETTWAY PARK,
A SUBDIVISION OF LOT 98, GOMEZ GRANT, MARTIN COUNTY, FLORIDA.

DEDICATION

PALM BEACH COUNTY
CITY OF WEST PALM BEACH
FLORIDA } SS

KNOW ALL MEN BY THESE PRESENTS,

That I, Katherine H. Dyer, the undersigned is the owner in fee simple of the land shown hereon and more particularly described as being Lots 17-18-22-23-24-27-28 and 29 of Pettway Park Sub-division, a subdivision of Lot 98 Gomez Grant, Martin County, Florida, and have caused the same to be re-subdivided, surveyed and platted as shown hereon, a subdivision known as Revised Plat of Pettway Park and do hereby dedicate to the perpetual use of the public as public Highways all the Roads or Streets shown hereon, reserving however unto myself, my heirs, successors, assigns or legal representatives, the reversion or reversions of the same, whichever abandoned by the Public or discontinued by law. Also lots 12-20-25 and 26 included in this above dedication.

WITNESS my HAND and SEAL this 27th day of Sept. A.D. 1939.

In the presence of
Ed. Bennett
W. C. Custer

Katherine H. Dyer [SEAL]
Katherine H. Dyer, 60 Palmgrove Drive,
West Palm Beach, Florida.

ACKNOWLEDGEMENT

PALM BEACH COUNTY
CITY OF WEST PALM BEACH
FLORIDA } SS

Before me personally appeared Katherine H. Dyer, personally known to me and who after having been duly sworn, acknowledge herself to be the same who executed the above instrument.

WITNESS MY HAND AND OFFICIAL SEAL at West Palm Beach, this 27th day of Sept. A.D. 1939.

My Commission Expires 10/16/42

J. B. Standing
Notary Public

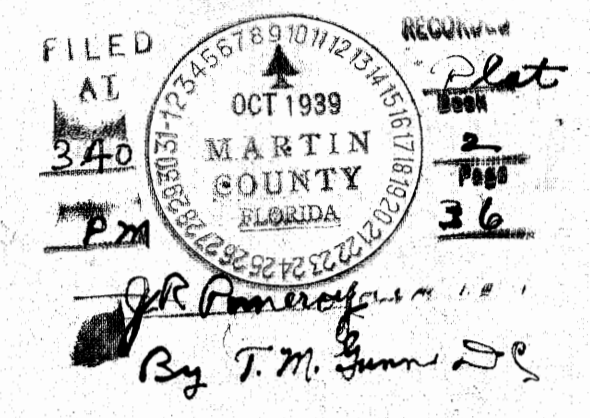
SURVEYORS CERTIFICATE

I HEREBY CERTIFY that the location, measurements and angles of the boundaries of the plat shown hereon are taken from actual data found on the ground by survey under my direction, that the subdivision into lots of the plat shown and as located by the above mentioned survey was made under my direction and that the information shown hereon is true and accurate to the best of my knowledge and belief and I, R.M.J. have been set according to law.

Wm. H. Root
Surveyor's Certificate No. 121,
Stuart, Martin County, Florida.

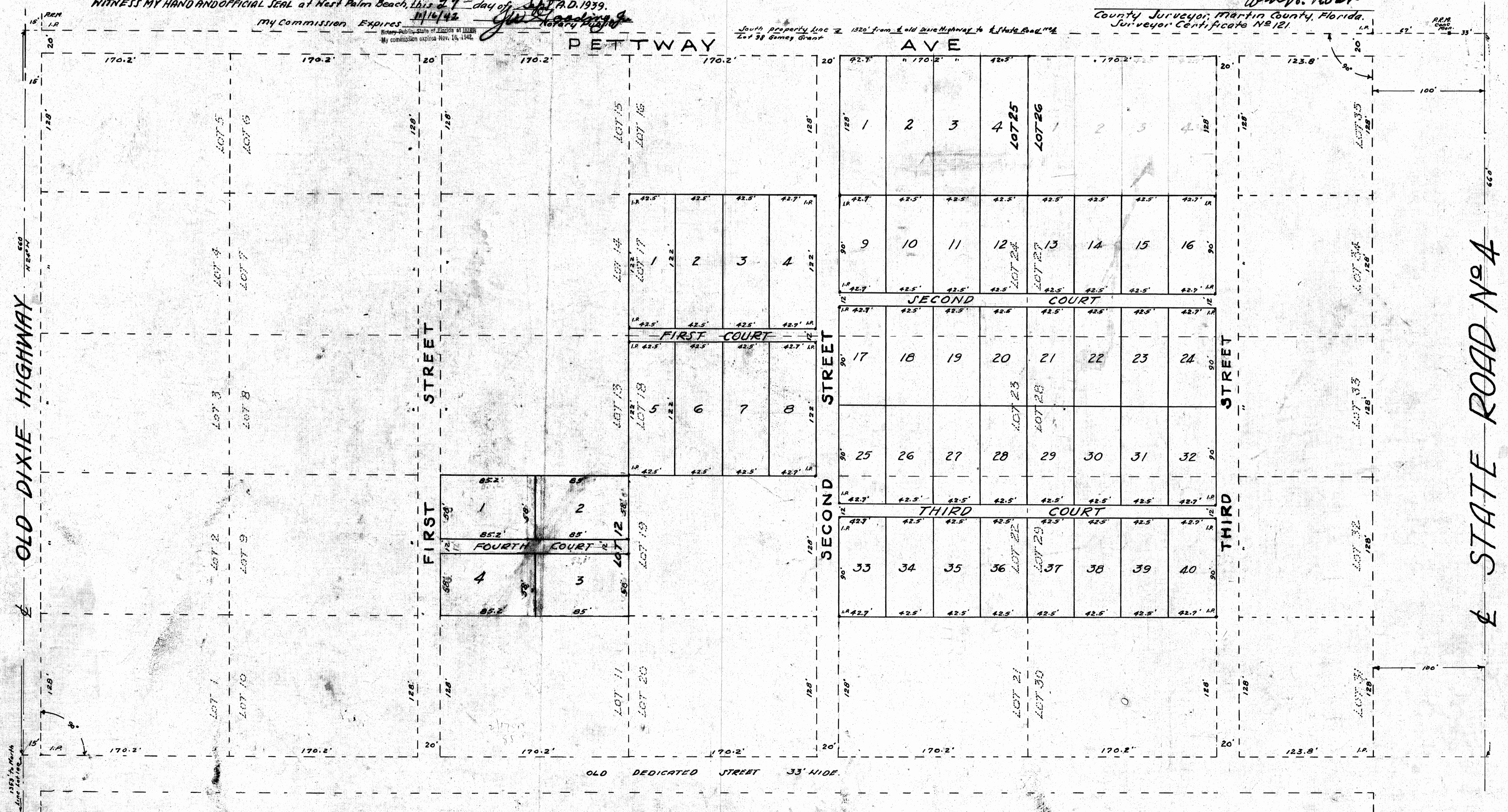
I HEREBY CERTIFY that this Plat complies with the provisions of "Act to Regulate the making of Surveys and Filing for Record of Maps and Plats in the State of Florida," approved by the Governor June 11, 1925.

Clerk of Circuit Court, Martin County, Fla.
By T. M. Gunn
Deputy Clerk.



Approved for Record this 25th day of Sept. A.D. 1939.

Wm. H. Root
County Surveyor, Martin County, Florida,
Surveyor's Certificate No. 121.



(W. E. Pettway)